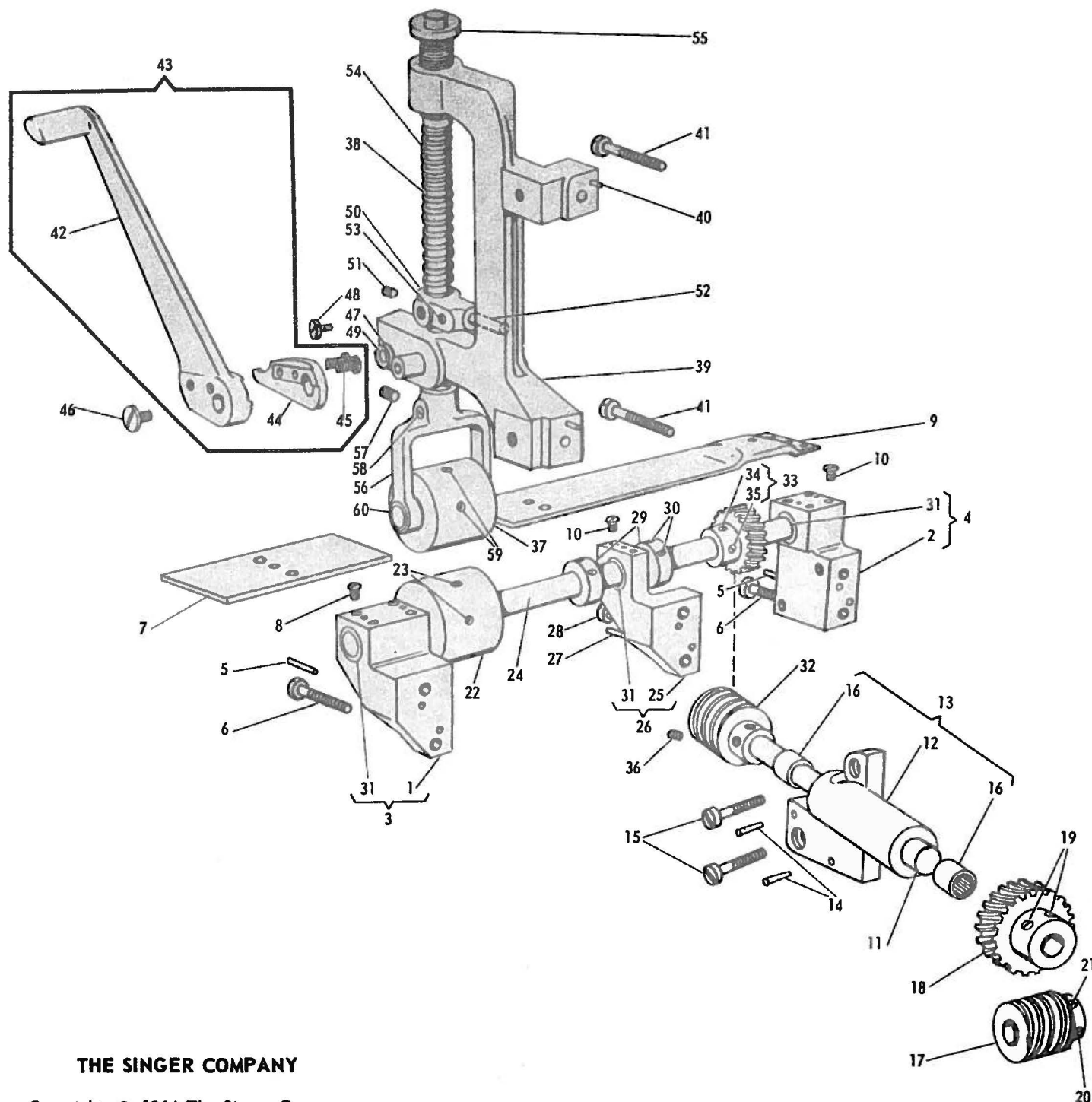


SUPPLEMENTARY PARTS ILLUSTRATIONS FOR SINGER* MACHINES 300W105, 205, 305 and 405

All Parts for Machines 300W105, 205, 305 and 405 are the same as Machine 300W101 with the following exceptions:



THE SINGER COMPANY

Copyright © 1964 The Singer Company
Rights Reserved under Inter-American Copyright Union
Copyright under International Copyright Union

*A Trademark of THE SINGER COMPANY

SUPPLEMENTARY PARTS LIST FOR MACHINES 300W105, 205, 305 and 405
(Same as Complete List for MACHINE 300W101 with the following EXCEPTIONS)

**CHANGE 300W101 LISTINGS
AS INDICATED BELOW**

CODE	NUMBER	DESCRIPTION	CODE	NUMBER	DESCRIPTION	CODE	NUMBER	DESCRIPTION
1	268752	Bed Hinge Connection Bracket (left)	22	131979	Puller Feed Roll (lower) and two 140279(830), for gauges from 3/16 in. to 1-1/4 in.	41	201308(805)	Puller Feed Roll (upper) Bar Bracket Screw (2)
2	268608	Bed Hinge Connection Bracket (right)				42	268430	Puller Feed Roll (upper) Bar Lifter
3	268452	Bed Hinge Connection Bracket 268752 with 268425(Needle Bearing on left)	23	140279(830)	Puller Feed Roll (lower) Set Screw (2)	43	268431	Puller Feed Roll (upper) Bar Lifter 268430 with 268432 and two 200050(803)
4	269609	Bed Hinge Connection Bracket (right) 269608 with 268425 (Needle Bearing on left)	24	268465	Puller Feed Roll (lower) Shaft	44	268432	Puller Feed Roll (upper) Bar Lifter Cam Plate
5	232866	Bed Hinge Connection Bracket Position Pin (4)	25	268448	Puller Feed Roll (lower) Shaft Bracket	45	200050(803)	Puller Feed Roll (upper) Bar Lifter Cam Plate Screw (2)
6	200017(803)	Bed Hinge Connection Bracket Screw (4)	26	268449	Puller Feed Roll (lower) Shaft Bracket 268448 with 268425	46	201011(819)	Puller Feed Roll (upper) Bar Lifter Cap Screw
7	268407	Puller Feed Cover Plate (left) for gauges from 3/16 in. to 1-1/4 in.	27	232866	Puller Feed Roll (lower) Shaft Bracket Position Pin (2)	47	201892	Puller Feed Roll (upper) Bar Lifter Roller
8	200571(804)	Puller Feed Cover Plate (left) Screw (2)	28	200017(803)	Puller Feed Roll (lower) Shaft Bracket Screw (2)	48	200202(806)	Puller Feed Roll (upper) Bar Lifter Roller Screw Stud
9	268464	Puller Feed Cover Plate (right) for gauges from 3/16 in. to 1-1/4 in.	29	268424	Puller Feed Roll (lower) Shaft Collar with two 200378(803) (2)	49	268433	Puller Feed Roll (upper) Bar Lifter Stop Pin
10	200571(804)	Puller Feed Cover Plate (right) Screw (2)	30	200378(803)	Puller Feed Roll (lower) Shaft Collar Set Screw (4)	50	268434	Puller Feed Roll (upper) Bar Position Bracket with 268435 and two 200362(803)
11	269621	Puller Feed Cross Shaft	31	268425	Puller Feed Roll (lower) Shaft Needle Bearing (3)	51	200362(803)	Puller Feed Roll (upper) Bar Position Bracket Set Screw
12	269622	Puller Feed Cross Shaft Bracket	32	269655	Puller Feed Roll (lower) Shaft Worm with two 200382(833) (for 5 stitches per inch)	52	268435	Puller Feed Roll (upper) Bar Position Bracket Stud
13	269623	Puller Feed Cross Shaft Bracket 269622 with two 268425	33	269656	Puller Feed Roll (lower) Shaft Worm Gear with 200362(803) and 201220(833) (for 5 stitches per inch)	53	200362(803)	Puller Feed Roll (upper) Bar Position Bracket Stud Set Screw
14	232866	Puller Feed Cross Shaft Bracket Position Pin (2)				54	268436	Puller Feed Roll (upper) Bar Spring
15	200017(803)	Puller Feed Cross Shaft Bracket Screw (2)	34	201220(833)	Puller Feed Roll (lower) Shaft Worm Gear Position Screw	55	913(806)	Puller Feed Roll (upper) Bar Spring Adjusting Thumb Screw
16	268425	Puller Feed Cross Shaft Needle Bearing (2)	35	200362(803)	Puller Feed Roll (lower) Shaft Worm Gear Set Screw	56	268437	Puller Feed Roll (upper) Bracket with 200354(803) and 200382(833), for gauges from 3/16 in. to 1-1/4 in.
17	269624	Puller Feed Cross Shaft Worm with 200382(833) and 201220(833)	36	200382(833)	Puller Feed Roll (lower) Shaft Worm Set Screw (2)	57	200354(803)	Puller Feed Roll (upper) Bracket Position Screw
18	269625	Puller Feed Cross Shaft Worm Gear with two 200362(803)	37	131979	Puller Feed Roll (upper) and two 140279(830), for gauges from 3/16 in. to 1-1/4 in.	58	200382(833)	Puller Feed Roll (upper) Bracket Set Screw
19	200362(803)	Puller Feed Cross Shaft Worm Gear Set Screw (2)				59	140279(830)	Puller Feed Roll (upper) Set Screw (2)
20	201220(833)	Puller Feed Cross Shaft Worm Position Screw	38	268428	Puller Feed Roll (upper) Bar	60	268438	Puller Feed Roll (upper) Shaft, for gauges from 3/16 in. to 1-1/4 in.
21	200382(833)	Puller Feed Cross Shaft Worm Set Screw	39	268429	Puller Feed Roll (upper) Bar Bracket with 268433			
			40	232077	Puller Feed Roll (upper) Bar Bracket Position Pin(2)			

SUPPLEMENTARY PARTS LIST FOR MACHINES 300W105, 205 305 and 405
(Same as Complete List for MACHINE 300W101 with the following EXCEPTIONS)

**CHANGE 300W101 LISTINGS
AS INDICATED BELOW
TO MAKE 300W105**

NUMBER	DESCRIPTION
268463	Bed Shaft with 268044, 268214, 268265 and 350534(803) in place of 268054
268219(016)	Needle Bar Rock Frame Thread Guide in place of 268219
268638(016)	Spreader with 268162 in place of 268638

**CHANGE 300W101 LISTINGS
AS INDICATED BELOW
TO MAKE 300W205**

NUMBER	DESCRIPTION
268463	Bed Shaft with 268044, 268214, 268265 and 350534(803) in place of 268054
267802(016)	Feed Dog, 46 needle hole, for needle sizes 20 and 22 (teeth cut 15 to the inch) with two 268318 and four 200172(804) for 267851 in place of 268618
268103	Looper Holder with four 350478(803) in place of 268602
268219(016)	Needle Bar Rock Frame Thread Guide in place of 268219
268151(016)	Needle Holder with two 50014(803) in place of 268627
267871	Presser Foot Plate in place of 268611
278872(016)	Presser Foot (spring hinged) complete, 46 needle hole, Nos. 206335, 226080, 267871, 268275 and 268612 in place of 268613
267851(016)	Throat Plate in place of 268614
268374(016)	Spreader with two 268162 in place of 268638

**CHANGE 300W101 LISTINGS
AS INDICATED BELOW
TO MAKE 300W305**

NUMBER	DESCRIPTION
268463	Bed Shaft with 268044, 268214, 268265 and 350534(803) in place of 268054
268811(501)	Feed Dog, 46 needle hole, for needle sizes 20 and 22 (teeth cut 15 to the inch) with three 268318 and six 200172(804) for 268976 in place of 268618
268836(501)	Looper Holder with six 350478(803) in place of 268602
268876(501)	Needle Bar Rock Frame Thread Guide in place of 268219
268896(501)	Needle Holder with three 50014(803) in place of 268627
268514	Needle Thread Tension Bracket in place of 268167
268515	Needle Thread Tension Releaser in place of 268168
230795	Presser Foot Hinge Pin in place of 206335
268920(501)	Presser Foot Plate in place of 268611
268921(501)	Presser Foot (spring hinged) complete, 46 needle hole, Nos. 226080, 230795, 268275, 268612 and 268920(501), in place of 268613
268976(502)	Throat Plate in place of 268614
268876(501)	Spreader with three 268162 in place of 268638

**CHANGE 300W101 LISTINGS
AS INDICATED BELOW
TO MAKE 300W405**

NUMBER	DESCRIPTION
268463	Bed Shaft with 268044, 268214, 268265 and 350534(803) in place of 268054
269006(501)	Feed Dog, 46 needle hole, for needle sizes 20 and 22 (teeth cut 15 to the inch) with four 268318 and eight 200172(804) for 269379 in place of 268618
269065(501)	Looper Holder with eight 350478(803) in place of 268602
269342(570)	Needle Bar Rock Frame Thread Guide in place of 268219
269191(501)	Needle Holder with four 50014(803) in place of 268627
268514	Needle Thread Tension Bracket in place of 268167
268515	Needle Thread Tension Releaser in place of 268168
269235(505)	Presser Foot Plate (left) in place of 268611
269236(505)	Presser Foot Plate (right) in place of 268611
26231	Presser Foot Plate Spring in place of 226080(2)
271117	Presser Foot Shank (left) in place of 268275
271119	Presser Foot Shank (right) in place of 268275
269237(505)	Presser Foot (hinged compensating) complete, 46 needle hole Nos. 269234, 269235(505), 269236(505), 271115, 271116, 271117, 271119, 350515(803), two each 26231, 200583(819) and 213910 in place of 268613
269379(501)	Throat Plate in place of 268614
269342(501)	Spreader with four 268162 in place of 268638

**OMIT THE FOLLOWING
PART LISTED FOR 300W101**

NUMBER	DESCRIPTION
202120	Presser Bar Lever Stop Pin